

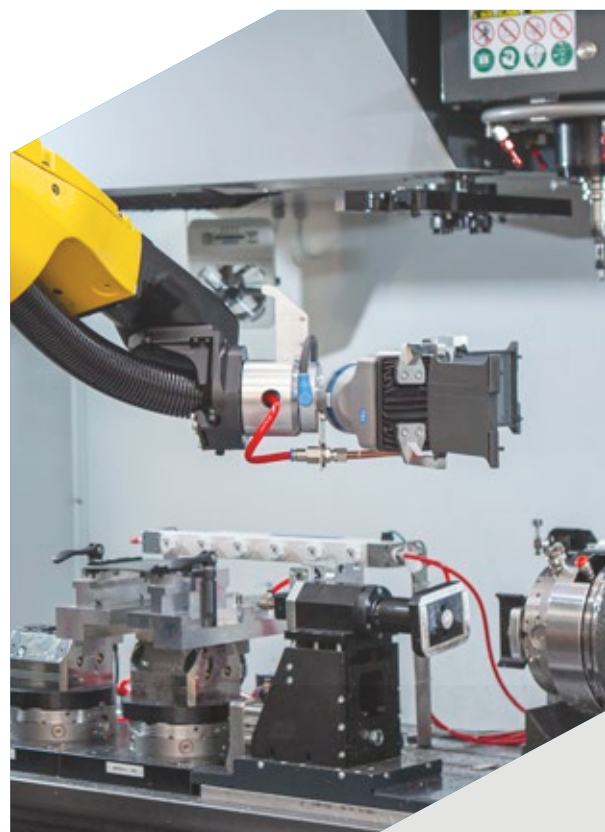
OUR WORLD OF
ENCLOSURES

italtronic
enclosures for electronics

Experience serving your electronics

For almost 40 years, we have specialized in manufacturing enclosures for industrial electronics and smart homes, offering customizable products, **innovative solutions** and **quality** materials.

Always **Made in Italy**. This is our promise.



Service first

With our in-house staff and the support of our selected network of partners worldwide, we offer qualified **technical and commercial assistance** throughout the process of selection, customization, and production.

The service is designed to provide our customers with **speed** of execution and **certainty of the outcome**. From free sampling to the delivery of our customized enclosures before mass production, all the information is available directly on our website, including technical drawings, including 3D, a configurator and a cost estimator for requested customizations.

ONLINE AVAILABILITY
OF TECHNICAL DRAWINGS

FREE SAMPLING

RAPID PROTOTYPING

ONLINE CONFIGURATOR

ONLINE CUSTOMIZATION COST

E-COMMERCE

TECHNICAL SUPPORT

*Fast*TRONIC SERVICE

Customization

AESTHETICS

The creativity applied to our enclosures is limitless. We assist our customers in tailoring their products, leveraging our expertise and dedicated service.

For us, creativity goes beyond mere aesthetics and emphasizes **functionality**: we devote our creative skills to our customers' projects. We employ a UV-cured, four-color digital inkjet **printing process** that enables photographic-quality results and maximum **flexibility** even for small batches.

With an **automated laser printing system**, we customize multiple sides of the enclosure simultaneously during the production cycle, resulting in significant **time and cost savings**.



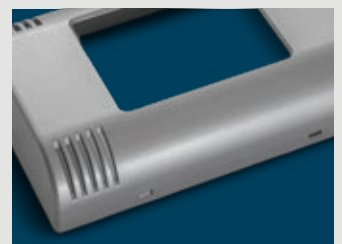
Multicolor digital printing



Laser printing



Single-color pad printing



Painting



Laser printing of incremental QR codes/barcodes and serial numbers

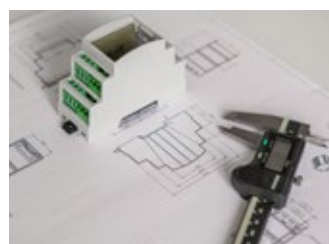
MECHANICS

Starting from a wide range of standard enclosures, we perform precision **mechanical processes** using technologically advanced automation to customize the product according to individual needs. This ensures maximum precision and reliability for each **customization**.

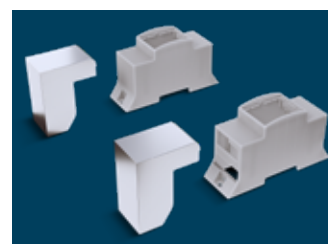
Additionally, thanks to the versatility of our molds, we offer the possibility of **customizing openings** by modifying only the relevant part of the mold, thus **saving** costs associated with CNC machining and limiting investments.



CNC machining



Engineering



Mold development and modification

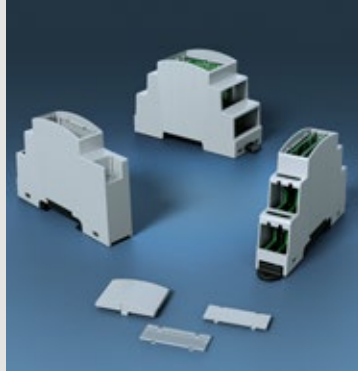
Enclosures for rail DIN application

Modulbox^{line}

DIN Rail (EN 60715) mounting enclosures for electronic products according to DIN 43880.



Modulbox XTS



Modulbox XTS DD



Modulbox XT



Modulbox One

Railbox^{line}

DIN rail (EN 60715) mounting enclosures to house electronic printed circuit boards.



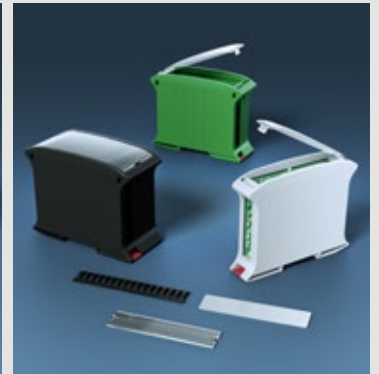
Railbox XT



Railbox Vertical e Multilevel



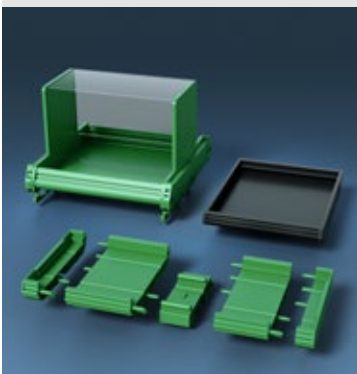
Railbox Closed



Railbox Compact Vertical

Support^{line}

Din rail (EN 60715) mounting modular supports for electronic printed circuit boards.



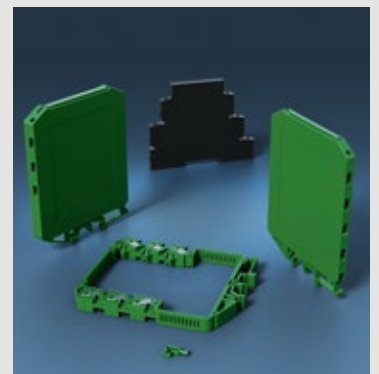
Support One



Support XT

Guidebox^{line}

DIN rail (EN 60715) mounting enclosures with integrated terminals.



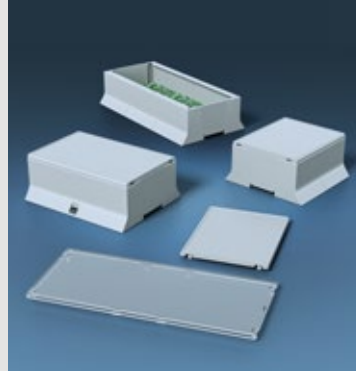
Guidebox



Modulbox Spacer



Modulbox XTS Compact



Modulbox XT PLC



Modulbox Special

Embedded box^{line}

DIN rail (EN 60715) mounting enclosures for embedded board.



Embedded box

Latusbox^{line}

Modular system for FIELD BUS, DIN Rail mounting (EN 60715).



Latusbox

We are internationally renowned for offering the widest range of **plastic enclosures for rail DIN applications** and **industrial panel mounting**.

+ 1200 STANDARD ENCLOSURES



Access the entire product range on the website

Wall mounting and home automation

iTouch^{line}

Enclosures for Home & Building Automation, wall mounting, for display max 4.3".



iTouch

Eyebox^{line}

Round Enclosures for Home & Building Automation, wall mounting, for display max 2.8".



Eyebox Simple



Eyebox

Thermo^{line}

Enclosures for Home & Building Automation, wall mounting.



Thermo

iGlass^{line}

Enclosures for Home & Building Automation, wall mounting.



iGlass

Cbox^{line}

Enclosures for Home & Building Automation for wall-mounting and electrical back boxes.



Cbox Universal

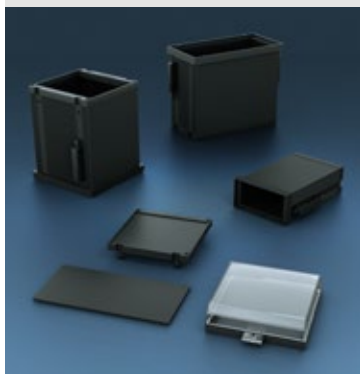


Cbox Int

Panel mounting enclosures

Incabox^{line}

Panel mounting enclosures for electronic products according to IEC 61554 (ex DIN 43700).



Incabox One



Incabox XT

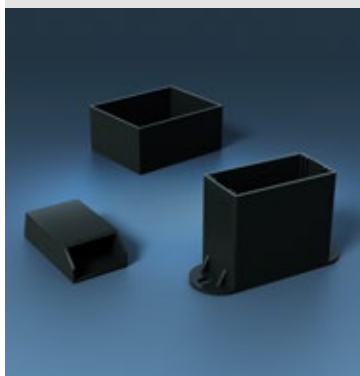


Incabox XTS

Enclosures for Resin and Guide

Resin^{line}

Enclosures for electronic equipment.



Resin

Guide^{line}

Enclosures with sockets for 8 (octal) or 11 pins (undecal) connections for electronic products.



Guide

Our product range stands out for its quality and the variety of available versions, which include solutions specifically designed for the measurement and control in the field of **Home and Building Automation**, as well as for the **Embedded board market**.

Certifications



Excellence comes first

In an increasingly fast-paced market, we keep up. The latest innovation is **FastTronic**, a "time saving" service to receive our enclosures, complete with graphic and mechanical customizations, with fast and guaranteed delivery in just six days from the order.

High-speed customization.

For more information
scan the QR code:



Italtronic S.r.l.

Corso Stati Uniti, 17
35127 · PD · ITALY
Phone +39 049 8947150

Information and sales:

export@italtronic.com

Technical department:

techcare@italtronic.com

www.italtronic.com

Follow us:    